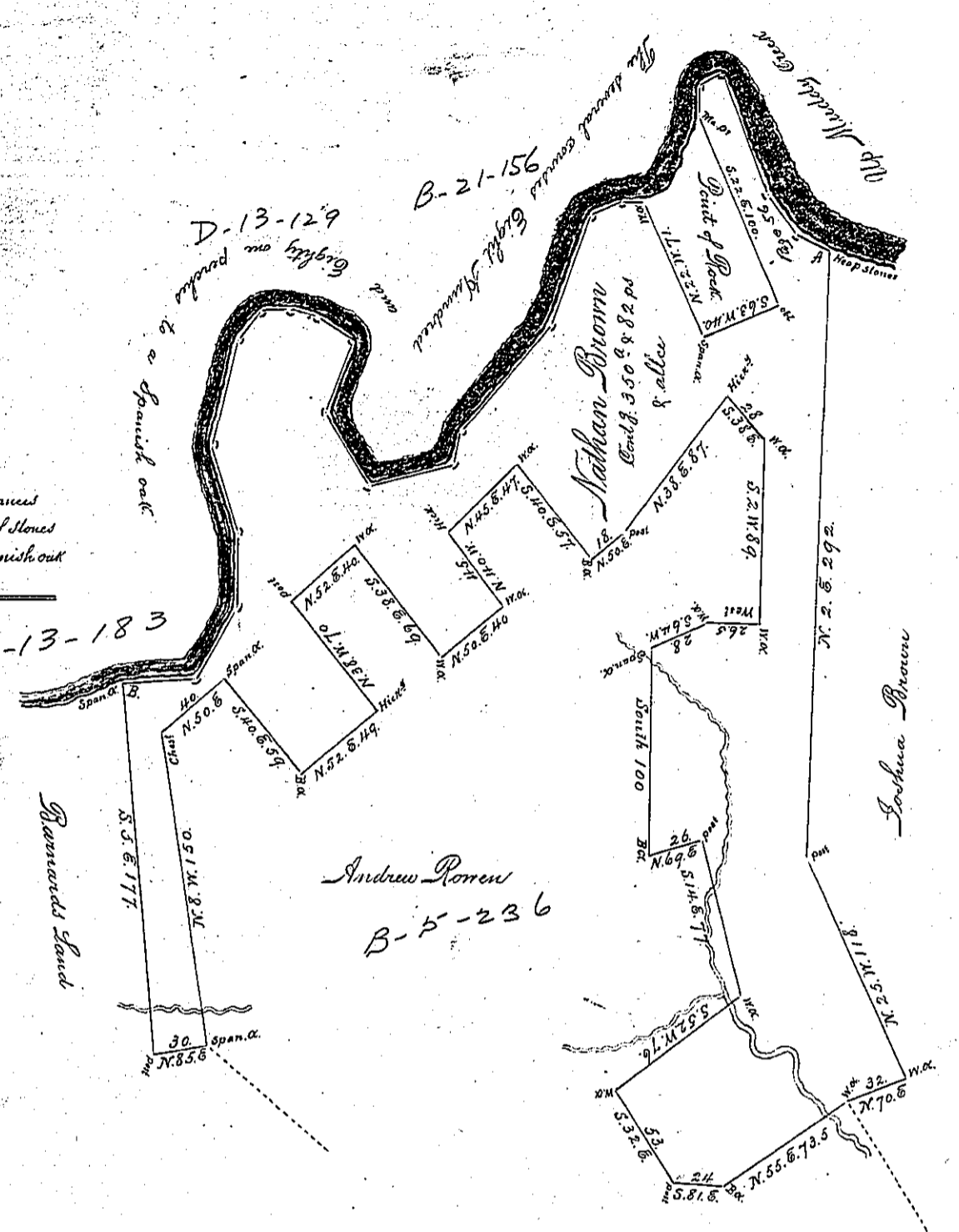


The following are the Courses and Distances along up Muddy Creek from the heap of stones where the Letter A is placed, to the Spanish oak where the letter B is placed viz:

N. 08. W. 06.
N. 36 W. 24
N. 24 W. 61.
S. 60 W. 13.
S. 5 E. 14.
S. 22 E. 100.
S. 68 W. 40.
N. 22 W. 71.
N. 51 W. 10.5
S. 63 W. 18.
S. 22 W. 26.
S. 16 W. 30.
S. 41 W. 66.
S. 7 W. 16.
S. 73 W. 44.
N. 32 W. 44.
N. 22 E. 38.
N. 56 W. 22.
N. 80 W. 12.
West 15.5
S. 37 W. 18.
S. 15 W. 53.
S. 16 E. 43.
S. 2 W. 37.
S. 31 W. 40.
West 38.



Situate in Town Township in the County of York. Containing as above set forth 350^a x 82 perches and the usual allowance &c. Originally surveyed on the 20th day of the 12th month 1769. - by William Matthews late D.S. In Pursuance of an application for 300^a N^o 5384. Granted to Nathan Brown bearing date the 27th day of March A.D. 1769.

And now at the request of the owner William Cuning the same has been calculated examined and found to be correct, and at his request Returned for Confirmation the 25th day of February Anno Domini 1815.

per Jacob Spangler D.S.

To Richard T. Leech Esq^r
Surveyor General
Harrisburg

IN TESTIMONY that the above is a copy of the original remaining on file in the Department of Internal Affairs of Pennsylvania, made conformably to an Act of Assembly approved the 16th day of February, 1833, I have hereunto set my Hand and caused the Seal of said Department to be affixed at Harrisburg, this third day of November 1896.

James W. Patton
Secretary of Internal Affairs.